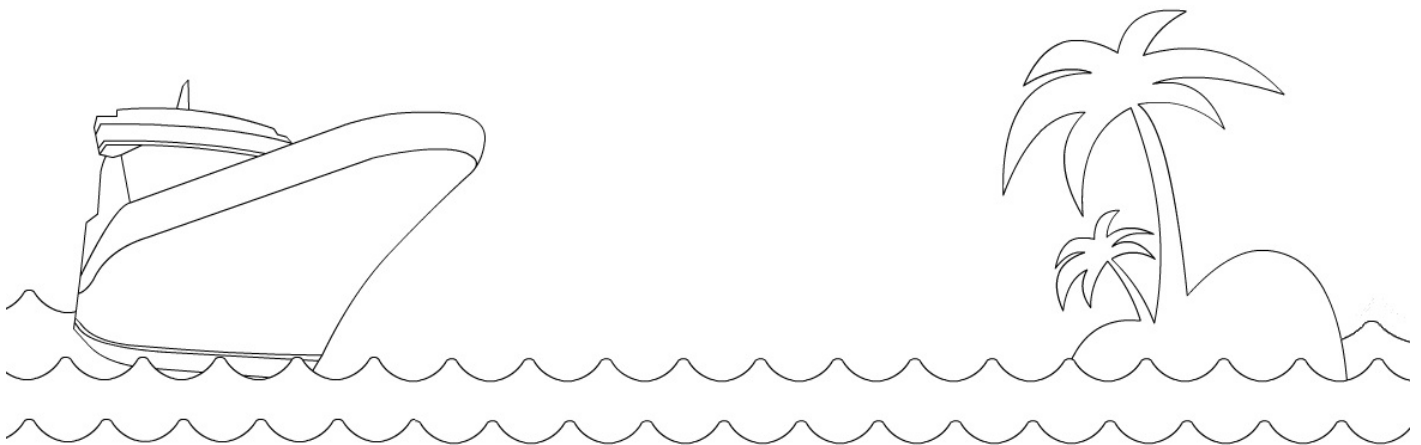


Trouble in Paradise

A Murder Mystery Party Aboard a Hawaiian Cruise bound for disaster

After cruising around the beautiful Hawaiian islands for a week the Captain of the Queen of Mystery luxury cruise liner is throwing a grand farewell party for all of the crew and passengers.

Unfortunately it hasn't been smooth sailing and there is trouble in paradise as some of the passengers and crew have threatened each other with their lives. Will everyone make it back to shore? Or will there be a burial at sea?



Thank you for choosing Trouble in Paradise a murder mystery party game. When you purchase the game, you will be given a comprehensive packet that will provide everything you will want and need to run your very own murder mystery party—one that will have your guests talking about for weeks, if not longer.

This murder mystery experience is designed to be easy to run and fun to play for all the guests involved. The game is played with all of your guests having active roles in the game and each guest having objectives to complete. These objectives keep the party from being pre-scripted and allow your guests to draw their own conclusions as to the motives and the identity of the murderer. This format also allows for great mingling amongst your guests and insures that all of your guests feel included. To add to the experience and suspense of the night, the murder happens during the party not before, as in some other murder mystery games. After they “die” the victim is given the role of detective and will try to discover who killed them using a new set of objectives.

All products come in the form of professionally designed pdfs that will contain all of your instructions and materials for running your party. Once purchased, you will receive an email that will give you a link to a secured part of our site and a password to enable you to download your party package pdfs.

What does your purchase include?

- A Host Guide— A complete how-to of throwing your party which includes directions on preparing the invitations, assigning characters and preparing for the party.
- A Schedule of the Night— A step-by-step breakdown of how the night will go.
- An Introduction— to be read to the guests upon arrival.
- Designed Invitations— that you can customize with the details of your party as well as the Passenger Press to be sent with the invitations and the guest list.
- Character Descriptions— full descriptions of the characters, including costuming and acting tips.
- Character Objective Sheets— this includes objectives for each character to try to achieve at each stage of the game in order to uncover evidence and find the murderer.
- Name Tags— for your guests.
- Evidence— This evidence will help your guests solve the mystery.
- The Solution— revealing the murderer and all the clues that could have led you there.
- "Whodunit" Cards—to allow your guests to guess the murderer as well as give everyone a chance to vote for the guest who was the most convincing in their assigned character role and the guest with the best outfit.
- Award Certificates— to be awarded to the guests that solve the mystery, the guest that is voted best actor, best costume, and the player with the most money at the end of the night.

As the Host, what do you need to do?

Your job as host will be to assign each guest a character and provide them with an invitation, character description and Pageant Press before the party. You will also need to print up and organize all of the material needed at the party including the instructions to the guests, objectives, evidence, solution, name tags, money and awards. The objectives, money and name tags will need to be placed in envelopes to be given to each guest as they arrive. To add to the experience you may want to decorate in a tropical or nautical theme and serve dinner or refreshments.

Party Schedule

- Most likely, the length of the party will take 1 ½ to 3 hours. The party length will depend on a number of factors, including how well your guests know each other and how well they mingle.
- The party may be longer if you choose to serve dinner, although much of the mingling done during Stage 2 may be done at the dinner table as well.
- Because the party is not pre-scripted, but set up in stages, as host it is important to observe the guests' behavior and move onto the next stage when you feel it is most appropriate. This will give everyone enough time to enjoy all aspects of the party and enable it to move along at an enjoyable pace.

Stage One: The Guests Arrive

- Have the guests (A) and (B) envelopes available for them. Welcome them with a flower lei for an authentic touch.

Stage Two: Introduction

- After all of the guests have arrived, have Taylor Silverscreen read the Introduction to the Guests.
- Have time for guests to mingle and complete their objectives
- This may require 30-60 minutes depending on how well your guests know each other.
- If serving dinner, this may be a good time for dinner to be served.

Stage Three: Murder & Investigation

- When guests start to settle down and you are sure the victim has completed all of their objectives arrange for the lights to go off.
- When the lights come back on, the victim will be dead.
- Outline the position of the body on the floor using masking tape.
- Have the Captain read the Initial Directions to the Guests After the Murder sheet
- The guests will open their (B) envelopes which will have new information and objectives for the guests to complete now that the murder has occurred. Give the Victim the name tag for Inspector Klooles.

Stage Four: Evidence Presentation

- When he/she asks, hand Inspector Klooles the evidence envelope so that they can present the findings of the evidence at the crime scene to the guests.
- It is best if the evidence is then laid on a table so that everyone may see it.
- Give your guests time to review the evidence and complete all of their objectives.
- Hand out the 'Whodunit' Card sheets and ask everyone to complete them and hand them back to you during this time.

Stage Five: The Solution

- When all the 'Whodunit' Card sheets are handed in, ask Inspector Klooles to read the solution aloud to the guests.
- Using the Whodunit Worksheet included, calculate who the winners are and award the certificates.

TROUBLE IN PARADISE BRIEF CHARACTER LIST (4-8) Female, (2-5) Male, (4-5) Either Female or Male

NECESSARY CHARACTERS:

(Male) Jacob Stewart – Captain. Youngest captain in the cruise fleet, ambitious and determined. He has a secret connection that would explain his quick road to success. *As a smooth talker this character is a born leader.*

(Female) Brenda Boatman – Chief Mate. Passed over for captain 3 times but she isn't going to let it happen again, even if she has to do something drastic. *Hard working but a little militant and defensive, this character is a little stern.*

(Male or Female) Taylor Silverscreen – Entertainment Director. Peppy and enthusiastic Taylor can't sit still and though Taylor's only been with the cruise line for a year there are those who are betting the ship will need a new entertainment director before the cruise is over. *Peppy, outgoing and enthusiastic this character is a popular person.*

(Male or Female) Kalama Ano – Waiter/waitress. Kalama is a details person who listens to others problems and learns from them. Kalama has information on most passengers and crew that could be used against them. *Hard working, quiet and reserved, this character will need to listen and observe the details around them.*

(Female) Maribel Castillo – Housekeeping. Finds things in rooms that are interesting and may be worth something to the right people. *Conniving and shrewd this character knows how to use their cunning to get what they want.*

(Female) Malia Silva Kalani – Polynesian Dancer. Dreams of Hollywood beckon this dancing beauty on to something different, no matter what the cost. *Beautiful and dynamic, this character is confident.*

(Male or Female) Scoop Williams – Passenger. Investigative reporter for tabloid interested in Lola, Brody and any other people that could be hiding something. *Curious and nosy, this character is always interested in other's business.*

(Female) Mrs. Ritchie Sterling – Passenger. Widow of famous tycoon. Looks frail but has spunk. Says what she thinks and knows what she wants. *Feisty and opinionated, this character is powerful in personality though not in size.*

(Male or Female) Lani Natua – Ukelele Player, "Molokai time is when I want to show up", and that is Lani's philosophy. Feisty and independent, Lani doesn't trust very many people and never goes to shore in Kona. *Relaxed and easy going.*

(Male) JT Goldwater – Passenger Oil man from Texas, loud boisterous and opinionated. Gambling man who is betting that Brody will go down in his next competition. *This character needs to be a bold, overbearing and "big" like Texas.*

OPTIONAL CHARACTERS:

(Male) Brody – Passenger. Surfer dude from California. Part of a contest on Oahu at the North Shore and favoured to win. *This character is outgoing and relaxed and needs to be someone who likes attention and is comfortable standing out.*

(Female) Lola – Movie Star – Passenger. Her last block buster movie was several years ago and she is determined not to become a "has been." *A born actress, this character is able to say all the right things.*

(Female) Crystal Goldwater – Passenger Spends money in every port on exotic things. She seems to have everything but isn't really happy and suspects that her husband is up to no good. *This character is classy, sophisticated and strong.*

(Male) Frank Pushman – Passenger. Salesman. Trip was bonus for hard work, can't stop working and bothers everyone with sales pitches. *Curious and enthusiastic, a people person who's a bit overbearing and jumps in on conversations.*

(Male) Wesley Morgan – Passenger Young professional, self absorbed and power hungry. He married Emily to move up in her daddy's business. *A playboy, materialistic and shallow, this character is not interested in anyone but themselves.*

(Female) Emily Morgan – Passenger Insecure and jealous of every pretty girl, daughter of JT Goldwater's partner in the oil business. *This character is attractive and intelligent but she lacks confidence in relationships and won't want to leave her husband alone with any women.*

(Female) Carol Frump – Passenger. School teacher taking sabbatical to find love and adventure and won't let anything get in her way. *Strong willed, capable, yet a bit shy and observant in social settings.*

(Male or Female) Riley Anderson – Passenger. Contest winner from Reno who doesn't like to lose anything. *Cunning and a bit shifty, a smooth talker.*

HERE ARE SOME TIPS TO HELP MAKE SURE THE NIGHT IS UNFORGETTABLE

READ YOUR CHARACTER SHEET – This contains your identity and all the information you will need to play your part. Do not discuss your character's information with anyone else before the game starts. If you do so, you are likely to give away secrets and spoil the game—mainly for yourself and the person you told.

REVIEW THE PASSENGER PRESS – Included in this invite will be a copy of the Passenger Press. Review this newsletter, it includes background information on the other characters attending the party. This information may be useful on the night of the party.

DRESS THE PART – The more into your character you are the easier it will be to enjoy all aspects of the night. In addition, it adds to the excitement, the photo opportunities, and your chances of being voted best dressed.

DON'T REVEAL EVERYTHING ABOUT YOUR CHARACTER – While there are many things that everyone needs to know about you, there are some things that should remain secret. Use your discretion as to not give too much away

USE YOUR CREATIVITY– Upon arrival, you will receive some money to spend any way you choose. Bribery and blackmail are encouraged. The wealthiest player at the end of the night will receive an award for their ability to turn a profit.

After cruising around the beautiful Hawaiian islands for a week the Captain of the Queen of Mystery luxury cruise liner is throwing a grand farewell party for all of the crew and passengers.

Unfortunately it hasn't been smooth sailing and there is trouble in paradise as some of the passengers and crew have threatened each other with their lives. Will everyone make it back to shore? Or will there be a burial at sea?

Get ready for an evening of deceit and backstabbing fun!

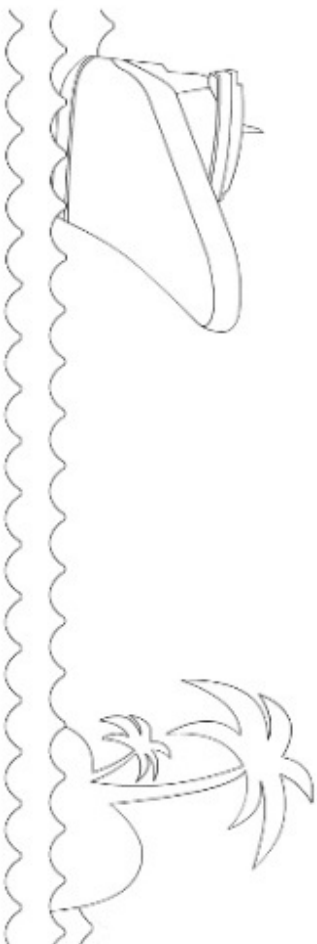
Please join us on: _____

at: _____

from: _____

RSVP: _____

© 2012 Party Time Mysteries - partytimemysteries.com



Aboard a Hawaiian Cruise bound for disaster

A Murder Mystery Party

Trouble in Paradise

You're invited to Join us for

Sample Character Description

DO NOT discuss this information with anyone else before the game starts! If you do so, you are likely to give away secrets and spoil the game—mainly for yourself and the person you told.

Passenger – Carol Frump

You are an English high school teacher from Pocatello, Idaho. You graduated at the top of your class from Boise State University and began your teaching career in the small town of Rigby, Idaho a few years ago. While you enjoyed growing up in a small farming community and appreciated the carefree country days of your youth and the intimate relationship forged between neighbours, you have always dreamed of seeing the world. Until you came on this cruise you had never travelled more than 300 miles from where you were born.

You have an active imagination and you are addicted to the written word and its ability to carry you away to another time and place. As a youth you read all the classics, well, as many as you could get your hands on. Books by Tolstoy, Huxley, Faulkner, Hemmingway, Fitzgerald, London, Twain, Carroll, Melville, Dickens, and countless others became your window to the outside world. Charlotte Bronte and Jane Austen are your heroes and you have read their books so many times you sometimes forget that their characters are not real people.

Like Marianne Dashwood, you are a hopeless romantic. You are in the process of writing your first novel and have high aspirations to one day quit teaching and move to a quiet little village in northern England and finish out your days as a writer. You secretly hope to come across your very own Colonel Brandon who will be able to finance your dream and provide you with love and security.

It is pretty hard to be a great author when you don't have enough personal experiences to draw from. At the suggestion of a close friend, you are taking a year sabbatical to find love and adventure and so far you haven't been disappointed. On this cruise you have met a lot of interesting and exciting people including wealthy socialites, movie stars and celebrities. You are determined to find out as much as you can about as many of the people you meet as possible, even if you have to go behind their backs to do it.

You have to admit you have a bit of a crush on Captain Jacob Stewart. He is a dashing and debonair leader who has graced your company a few times on this voyage and you are hoping to get to spend more time with him at the reception. Before coming on board you read an article Scoop Williams wrote about Captain Stewart's wealthy relatives, the Sterlings. The late Richard Jacob Sterling II is Captain Stewart's uncle and his widow, Mrs. Sterling is now the owner of this cruise line. The article wasn't very flattering, in fact it was quite negative concerning the entire family and the captain's aunt made it sound like the captain was a fraud but you are sure she is just a spiteful old lady.

ACTING AND DRESSING YOUR PART: Dress in conservative formal wear, nothing too flashy yet nice enough to make a good impression on the captain, and any other eligible bachelors you may see at the reception. You may want to bring a good book in your bag, in case things don't go as planned, you can always turn to the classics for comfort and advice.

Sample Objectives

Carol Frump – Passenger

Objectives at the start of the party:

These are things that are in your best interest to do before the evening goes much further. Be aware of what others around you are doing as well!

- Tell Taylor that you heard they are making a movie and ask what it is about and what qualities they are looking for in the lead their character?
- Ask Maribel if she ever noticed anything interesting in the guests rooms.
- Flirt with any eligible single men at the party.
- Ask the Captain about his job and where he has travelled in the world.
- Ask Malia about her dancing career.

PASSENGER PRESS

A DAILY GUIDE TO CRUISE ACTIVITIES

SUNRISE: 6:15 - SUNSET: 20:18

CAPTAIN'S ALOHA RECEPTION

As our voyage together is approaching its end, the Captain and Crew would like to invite all of the passengers to a farewell reception to celebrate our week together. We look forward to meeting with you:

Scoop Williams – Passenger.

Investigative reporter for tabloid interested in Lola, Brody and any other people that could be hiding something.

Mrs. Ritchie Sterling –

Passenger. Widow of owner of the cruise line. Looks frail but has spunk. Says what she thinks and knows what she wants.

JT Goldwater – Passenger.

Oil man from Texas, loud boisterous and opinionated. Gambling man who is betting that Brody will go down in his next competition.

Crystal Goldwater – Passenger.

Spends money in every port on exotic things. She seems to have everything but isn't really happy and suspects that her husband is up to no good.

Frank Pushman – Passenger.

Salesman. Trip was bonus for hard work. He can't stop working and bothers everyone with sales pitches.

Lola – Movie Star. Her last block buster movie was several years ago and she is determined not to become a "has been."

Wesley Morgan – Passenger.

Young professional, self absorbed and power hungry. He married Emily to move up in her daddy's business. A playboy.

Emily Morgan – Passenger.

Insecure and jealous of every pretty girl. Daughter of JT Goldwater's partner in the oil business.

Brody – Passenger.

Surfer dude from California. Part of a contest on Oahu at the North Shore and favoured to win.

Carol Frump – Passenger.

School teacher taking sabbatical to find love and adventure and won't let anything get in her way.

Riley Anderson – Passenger.

Contest winner from Reno who doesn't like to lose at anything.

SHIP'S OFFICERS AND CRUISE STAFF

Jacob Stewart – Captain. Youngest captain in the cruise fleet, ambitious and determined. He has a secret connection that would explain his quick road to success.

Brenda Boatman – Chief Mate. Passed over for captain 3 times but she isn't going to let it happen again, even if she has to do something drastic.

Taylor Silverscreen – Entertainment

Director. Peppy and enthusiastic Taylor can't sit still and though Taylor's only been with the cruise line for a year there are those who are betting the ship will need a new entertainment director before the cruise is over.

Kalama Ano – Waiter/waitress. Hard working. Kalama is a details person who listens to others' problems and learns from them. Kalama has information on most passengers and crew that could be used against them.

Maribel Castillo – Housekeeping. Finds things in rooms that are interesting and may be worth something to the right people.

Malia Silva Kalani – Polynesian

Dancer. Hollywood dreams beckon this dancing beauty on to something different, no matter what the cost.

Lani Natua – Ukelele Player. "Molokai time is when I want to show up" is Lani's philosophy. Feisty and independent, Lani doesn't trust very many people.

MORE SHIP ANNOUNCEMENTS

Tonight's Activities:

Captain's Aloha Reception

Tonight's Show:

Malia and Lani

Tonight's Dress:

Formal

Congratulations to

Mr. and Mrs.
Wesley Morgan

Just married.

Please Note:

Lost and found items can be claimed at the information booth on the Maui deck.